

FOR SALE



Two 7,200 SF Buildings on 1.91 Acres 1921 & 1925 Eastview Road, Conyers, GA 30012

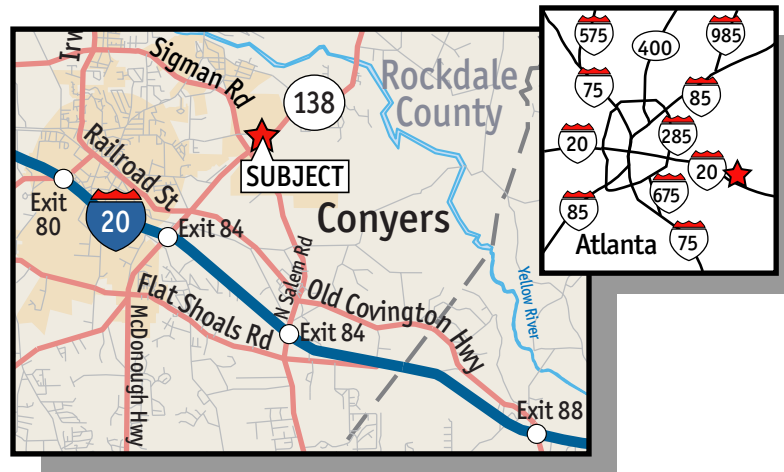
- Zoned M-1, Rockdale County
- Access Easement For Access to Hwy. 138
- 2 Miles From Interstate 20

Frontage Building:

- 3,600 SF Air Conditioned Office/Showroom
- 7 Grade Level Doors (14'x14')
- 18' Clear Height; 22' at Center
- Electric Doors
- Drive Through Bays
- 3 Phase Power
- All Utilities Including Power

Rear Building:

- 900+/- SF of Office with 800+/- SF Office Upstairs
- 9 Grade Level Doors (14'x14')
- 18' Clear Height; 22' at Center
- Drive Through Bays
- 3 Phase Power
- All Utilities Including Sewer



For more information contact:

Jason McCart

jmccart@kingindustrial.com

Direct Phone: 404.942.2048

Cell: 770.601.5451

Or contact:

Jeremy Dupree

jdupree@kingindustrial.com

Direct Phone: 404.942.2050

Cell: 770.633.5312



FOR SALE

Two 7,200 SF Buildings on 1.91 Acres

1921 & 1925 Eastview Road, Conyers, GA 30012

Aerial View of Lot Boundaries & Access Easement



For more information contact:

Jason McCart

jmccart@kingindustrial.com

Direct Phone: 404.942.2048

Cell: 770.601.5451

Or contact:

Jeremy Dupree

jdupree@kingindustrial.com

Direct Phone: 404.942.2050

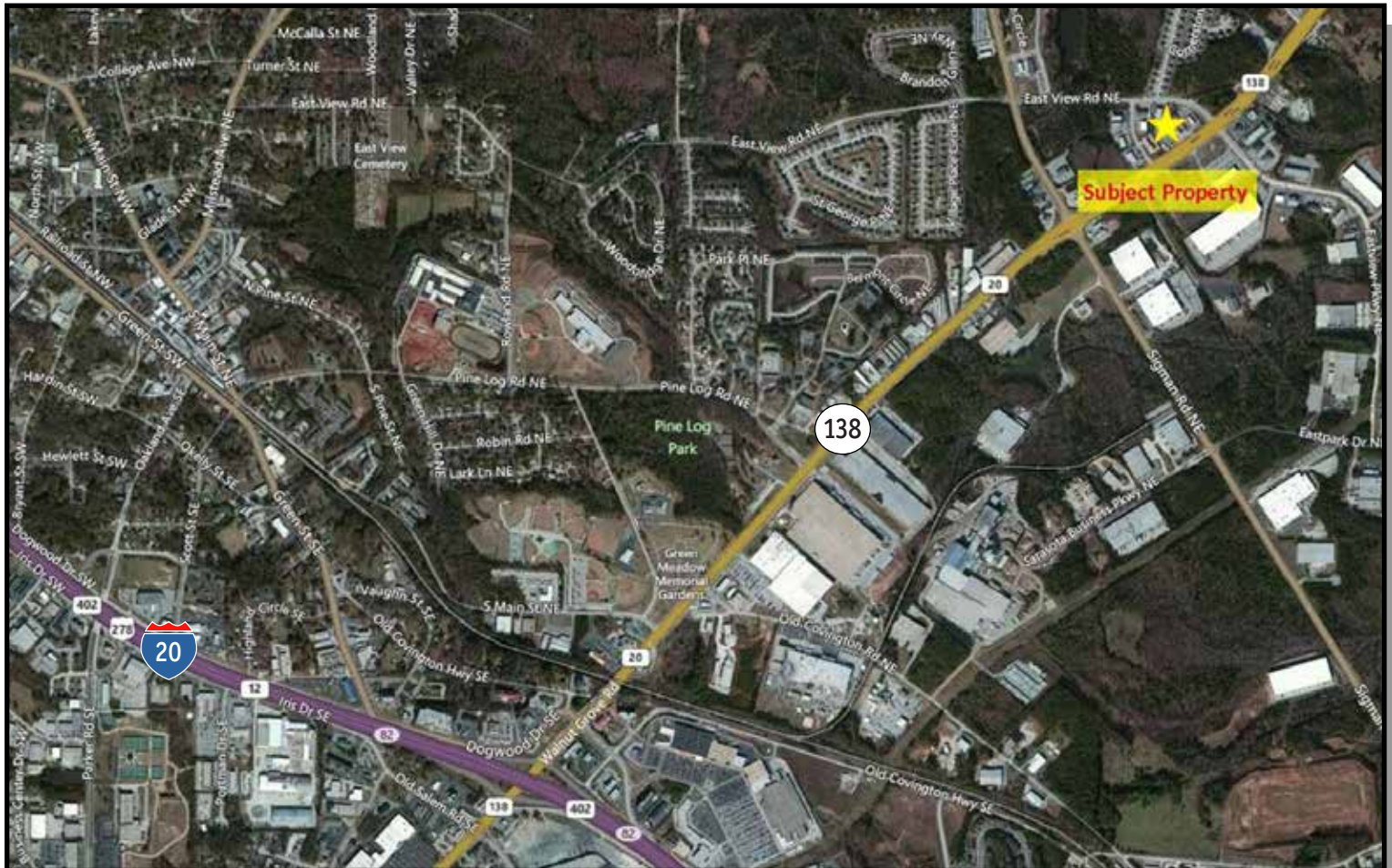
Cell: 770.633.5312

FOR SALE

Two 7,200 SF Buildings on 1.91 Acres

1921 & 1925 Eastview Road, Conyers, GA 30012

Aerial View



For more information contact:

Jason McCart

jmccart@kingindustrial.com

Direct Phone: 404.942.2048

Cell: 770.601.5451

Or contact:

Jeremy Dupree

jdupree@kingindustrial.com

Direct Phone: 404.942.2050

Cell: 770.633.5312