

AVAILABLE

2001 DEERE DRIVE CONYERS, GEORGIA 30013

**CORPORATE
HEADQUARTERS/
DISTRIBUTION
FACILITY**
378,893 SF ON
39.46 ACRES



**FOR MORE
INFORMATION
PLEASE
CONTACT**

Greg Haynes, SIOR
404.923.1436
greg.haynes@cbre.com

Todd Barton, SIOR
404.923.1435
todd.barton@cbre.com



CBRE
404.504.7900
www.cbre.com/atlanta

3280 Peachtree Road
Suite 1400
Atlanta, GA 30305



CBRE | 3280 Peachtree Rd | Suite 1400 | Atlanta, GA 30305 | www.cbre.com/atlanta

© 2011 CBRE, Inc. This information has been obtained from sources believed reliable. We have not verified it and make no guarantee, warranty or representation about it. Any projections, opinions, assumptions or estimates used are for example only and do not represent the current or future performance of the property. You and your advisors should conduct a careful, independent investigation of the property to determine to your satisfaction the suitability of the property for your needs.

AVAILABLE

2001 DEERE DRIVE CONYERS, GEORGIA 30013

**CORPORATE
HEADQUARTERS/
DISTRIBUTION
FACILITY**
378,893 SF ON
39.46 ACRES



**FOR MORE
INFORMATION
PLEASE
CONTACT**

Greg Haynes, SIOR
404.923.1436
greg.haynes@cbre.com

Todd Barton, SIOR
404.923.1435
todd.barton@cbre.com



CBRE
404.504.7900
www.cbre.com/atlanta

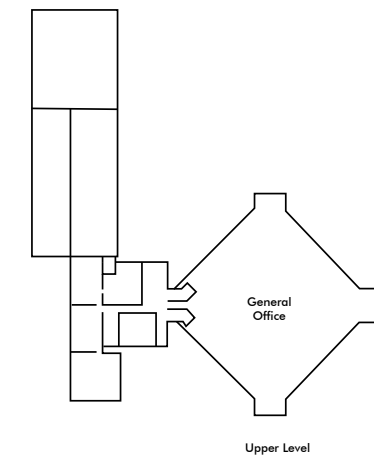
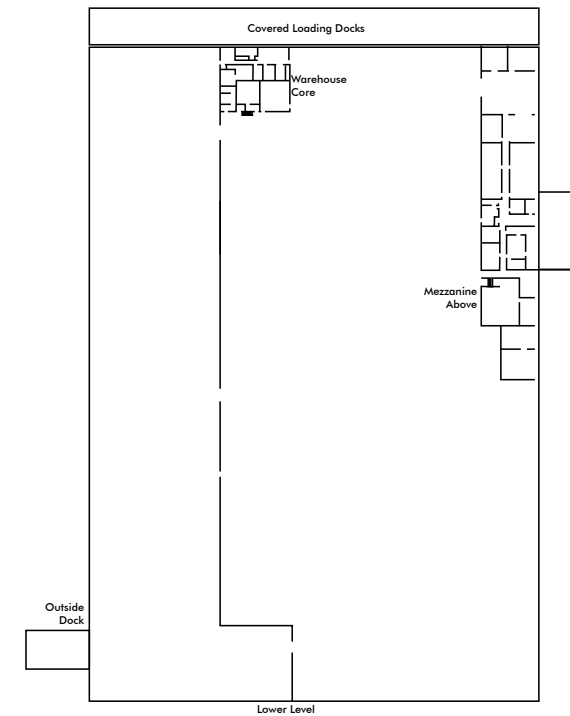
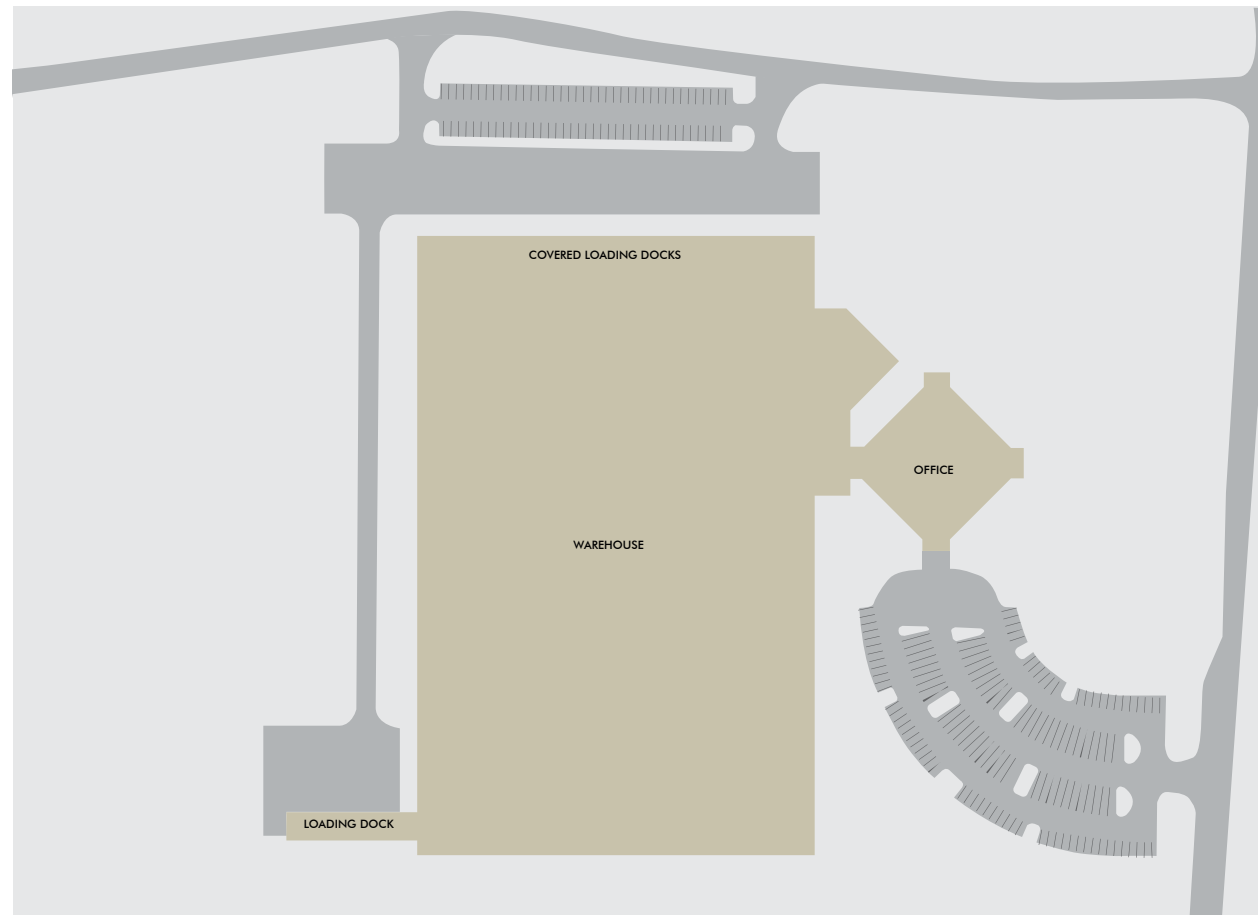
3280 Peachtree Road
Suite 1400
Atlanta, GA 30305



Location:	2001 Deere Drive Conyers (Rockdale County), GA
Total Square Feet:	378,893 SF
Warehouse Size:	338,184 SF
Office Size:	22,500 SF
Training Center:	18,299 SF
Site Size:	39.46 acres
Built:	1978
Visibility:	I-20 visibility



2001 DEERE DRIVE | CONYERS, GA



Distance to:

Savannah	243 miles
Charleston, SC	293 miles
Jacksonville, FL	341 miles
Air:	
Hartsfield Atlanta Int'l Airport	36 miles
Augusta Regional Airport	124 miles

ADDITIONAL FEATURES

Column Spacing:	24' x 48' typical
Dimensions:	504' x 768'
Parking:	300 spaces (expandable)
Lighting:	Fluorescent
Power:	277/480 volts, three phase 2000 amps
Ceiling Height:	20' clear
Skylights:	Yes
Sprinkler:	Wet system
Floor Slab:	5" reinforced concrete
Dock-High Loading:	21 positions
Rail Service:	Available through CSX

For information contact: Greg Haynes – 404.923.1436 or Todd Barton – 404.923.1435