

94,955 SF FOR SALE > INDUSTRIAL SPACE > SNAPPINGER / I-20 EAST

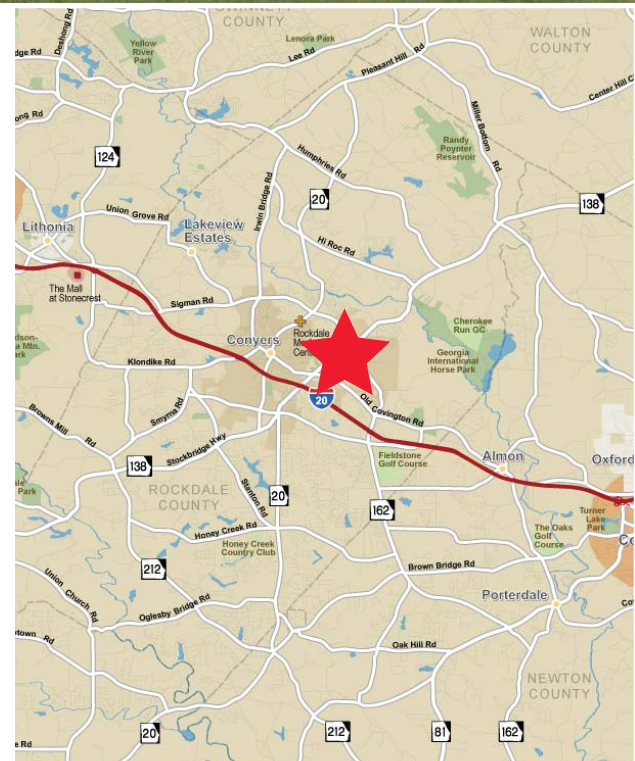
1820 Conyers Station Road

CONYERS, GA 30013



Building Features

- > 94,955 SF Total
- > 2,500 SF Office
- > 25'-29' Clear Height
- > 6 Dock High Doors
- > 1 Oversized Drive-In Door
- > 40' x 42' Typical Column Spacing
- > Fully Sprinklered
- > Heavy Power
- > Ample Parking
- > Potential Retail Frontage Available on GA Hwy. 138
- > Excellent Access to I-20 via GA Hwy. 138
- > ±10 Acres Available for Expansion, Outside Storage Trailer Parking or Further Development. Can Be Sold Separately.



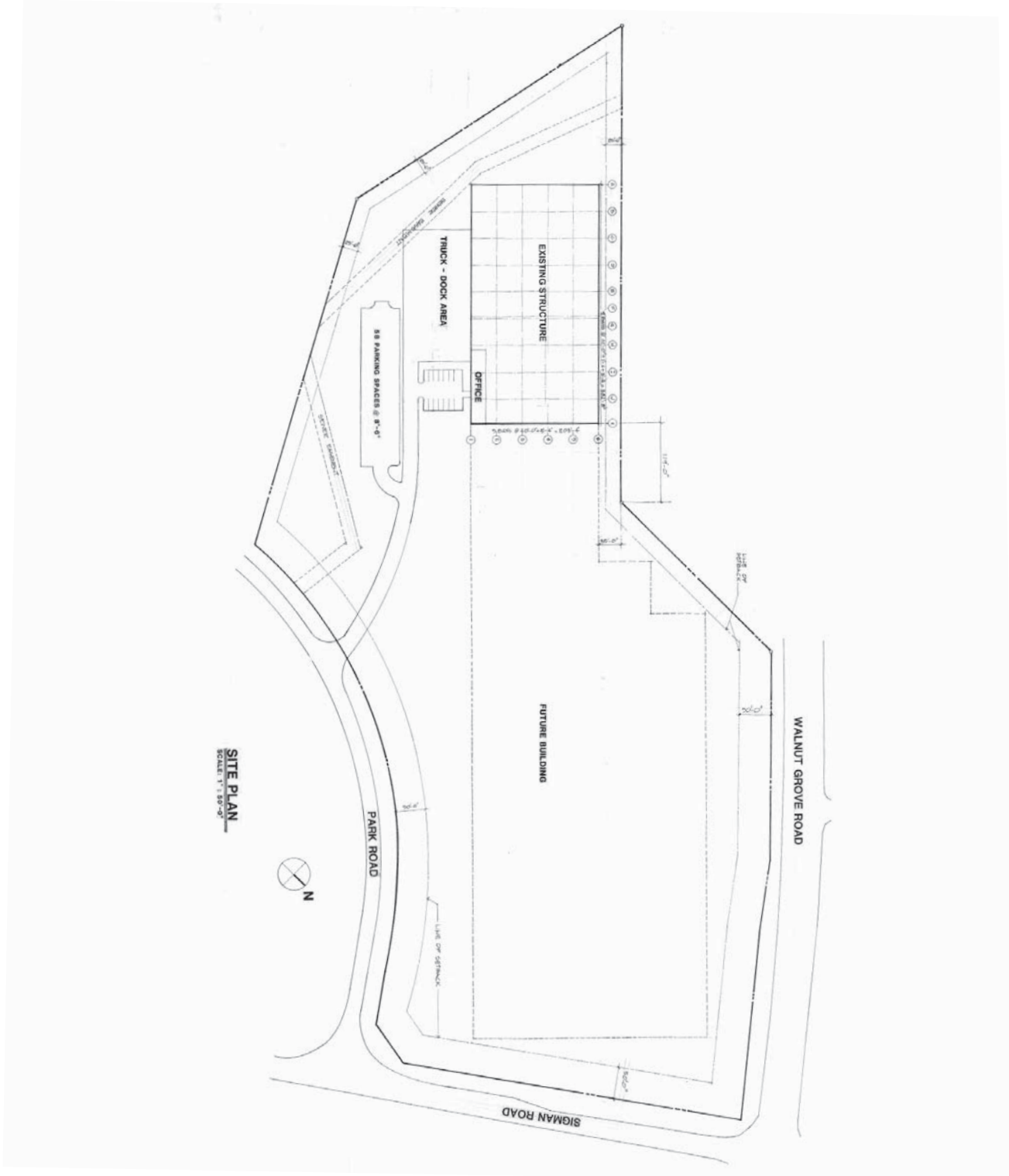
RYAN SAWYER
404 877 9274 DIRECT
ryan.sawyer@colliers.com

COLLIERS INTERNATIONAL
Two Midtown Plaza, Suite 1100
1349 West Peachtree Street NE
Atlanta, Georgia 30309-2956
www.colliers.com

94,955 SF FOR SALE > INDUSTRIAL SPACE > SNAPPINGER / I-20 EAST

1820 Conyers Station Road

CONYERS, GA 30013



Colliers International - Atlanta, Inc., and certain of its subsidiaries, is an independently owned and operated business and a member firm of Colliers International Property Consultants, an affiliation of independent companies with over 61 offices throughout more than 480 countries worldwide. Information contained herein has been obtained from the owner of the property or other sources that we deem reliable. We have no reason to doubt its accuracy, but we do not guarantee it.



94,955 SF FOR SALE > INDUSTRIAL SPACE > SNAPPINGER / I-20 EAST

1820 Conyers Station Road

CONYERS, GA 30013



Colliers International - Atlanta, Inc., and certain of its subsidiaries, is an independently owned and operated business and a member firm of Colliers International Property Consultants, an affiliation of independent companies with over 61 offices throughout more than 480 countries worldwide. Information contained herein has been obtained from the owner of the property or other sources that we deem reliable. We have no reason to doubt its accuracy, but we do not guarantee it.

